

What the \$#!*! Is AI?

Practical Applications for
Modern Librarians

with Maurice, Sara & Liz





**EVERYTHING
EVERYWHERE
ALL AT ONCE**

大馬行空

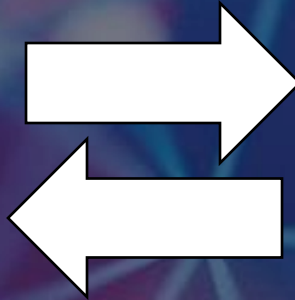
福

How it Works?

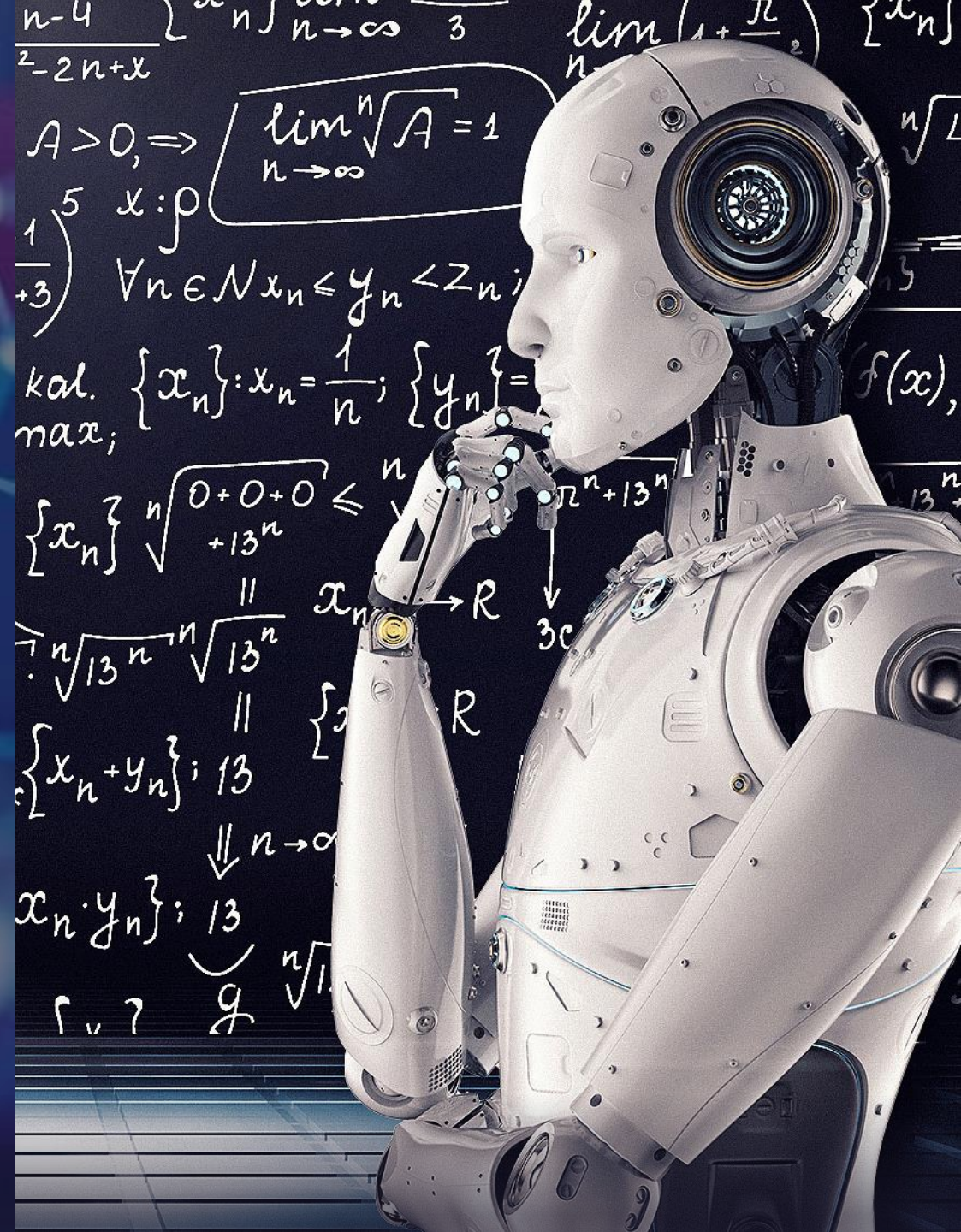
INPUT



BLACK
BOX



OUTPUT



The DATA



Regulation



A hand in a grey suit jacket with a white shirt cuff and a gold cufflink is shaking a silver, articulated robotic hand. The background is a dark blue digital space with a glowing blue globe, a circular data chart with percentages (10%, 20%, 30%), and a clock face with the number 35. The overall theme is human-robot collaboration in a technological context.

The *Human*

Element

A COMPUTER

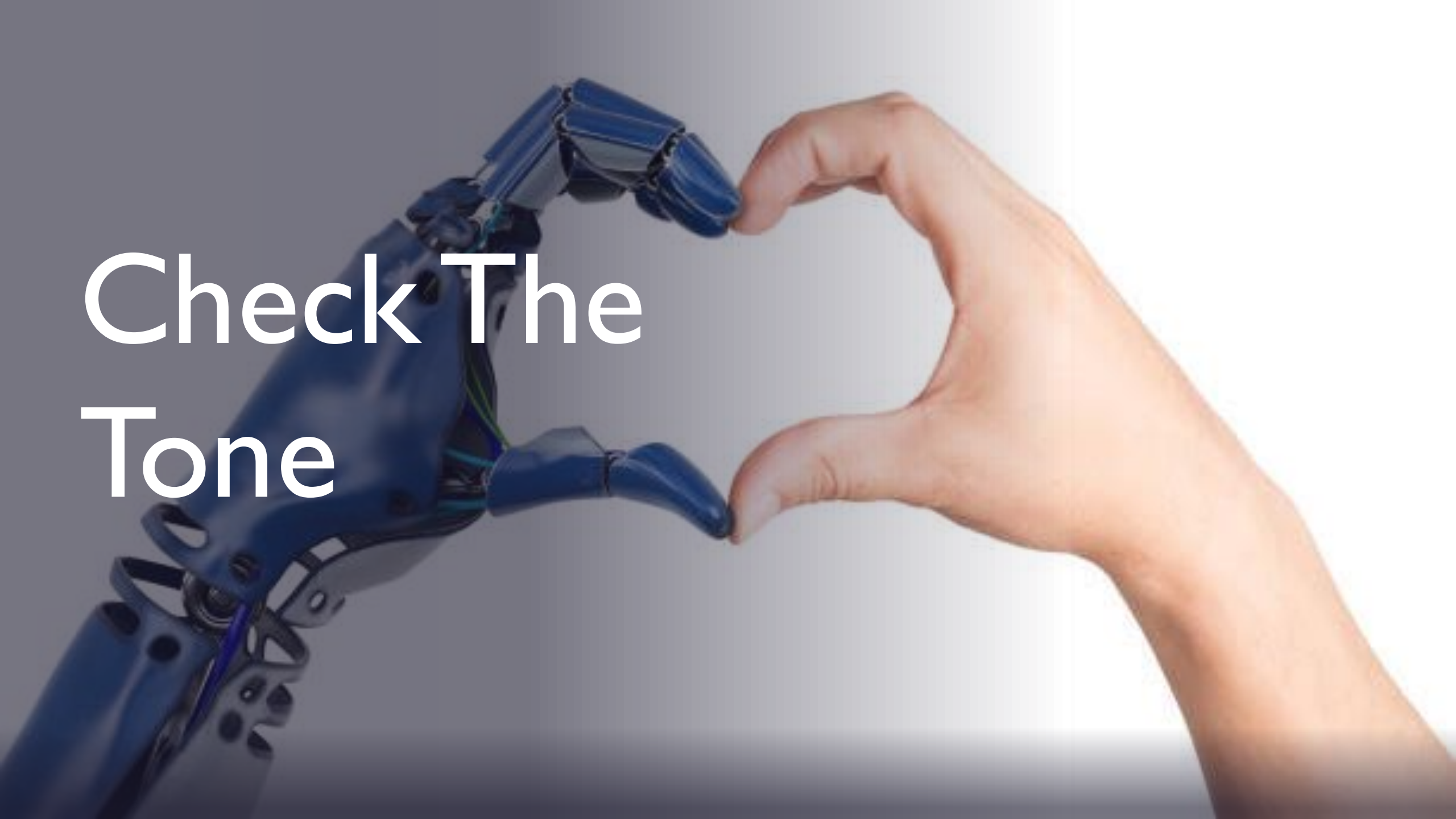
CAN NEVER BE HELD ACCOUNTABLE

THEREFORE A COMPUTER MUST NEVER

MAKE A MANAGEMENT DECISION

Check The Facts



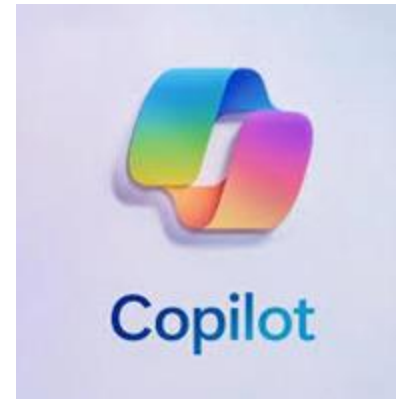
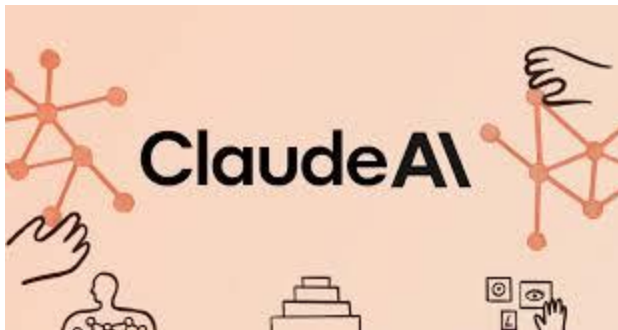


Check The
Tone

Examples of GenAI Tools



Midjourney



Compare models at <https://artificialanalysis.ai>

Try GenAI in “Safe Mode”

Say hello to DuckDuckGo AI Chat!

Anonymous access to popular AI models, including GPT-4o mini, Claude 3, and open-source Llama 3.1 and Mixtral.



Private chats,
anonymized by us



No AI training on
your conversations



Multiple AI models,
all in one place


► Get Started

Anonymous access to popular AI models, including GPT-4o mini, Claude 3, and open-source Llama 3.1 and Mixtral. You can access DuckDuckGo AI Chat directly at duck.ai.

AI is Everywhere

★ AI Overview

AI stands for Artificial Intelligence, which is a set of technologies that allow computers to perform tasks that usually require human intelligence. AI can perform a variety of complex tasks, including:

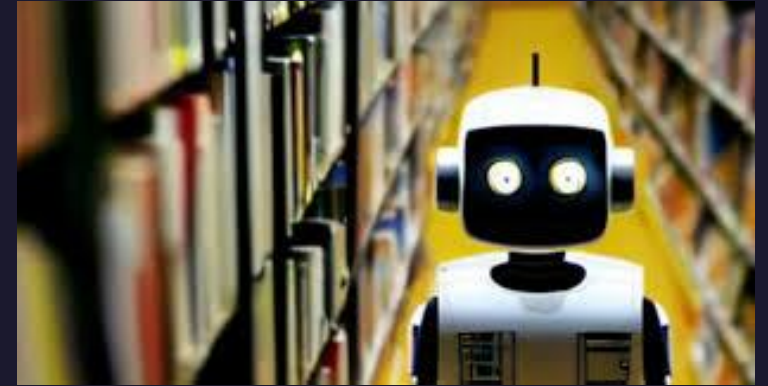
- Analyzing data
- Making recommendations
- Understanding and translating written and spoken language
- Seeing
- Learning
- Problem-solving
- Decision-making 



grammarly



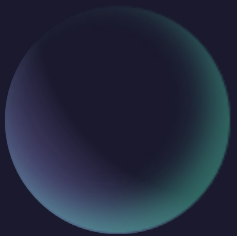
Practical GenAI in the Library



Experiment, have fun, learn something new!

Customers will ask about AI -

Be **ready** to *engage*.



Program Planning

The background features a complex network of glowing nodes and connecting lines. The nodes are primarily white and light blue, with some red nodes scattered throughout. The lines are thin and connect the nodes in a web-like pattern. The overall color palette is dominated by deep blues and vibrant reds, creating a futuristic and technological atmosphere.

A hand is shown holding a glowing teal globe of the Earth. The background is dark with a network of white lines and glowing orange dots. Various white icons are scattered around: a handshake, a group of three people, a globe with gears, a cloud with a download arrow, a smartphone, and a laptop. The word "Marketing" is written in large white letters across the center of the globe.

Marketing

Other Ideas

```
groups_free(struct group_info *group_info)
{
    if (groupinfo->blocks[0] != group_info->small_block) {
        int i;
        if (groupinfo->blocks[0] != group_info->small_block) {
            for (i = 0; i < group_info->nblocks; i++)
                int i;
                freepage((unsigned long)groupinfo->blocks[i]);
            for (i = 0; i < group_info->nblocks; i++)
                freepage((unsigned long)groupinfo->blocks[i]);
            kfree(groupinfo);
        }
        kfree(groupinfo);
    }
}

EXPORT_SYMBOL(groupsfree);
/* export the groupinfo to a user-space array */
int groups_touser(gid_t _user *grouplist,
/* export the groupinfo to a user-space array */
const struct group_info *group_info)
static int groups_touser(gid_t _user *grouplist,
const struct group_info *group_info)
{
    int i;
    unsigned int count = groupinfo->nblocks;
    int i;

    unsigned int count = groupinfo->nblocks;
    for (i = 0; i < group_info->nblocks; i++) {
        unsigned int cpcount = min(NGROUPSPERBLOCK, count);
        for (i = 0; i < group_info->nblocks; i++) {
            unsigned int len = cpcount * sizeof(*grouplist);
            unsigned int cpcount = min(NGROUPSPERBLOCK, count);
            int len = cpcount * sizeof(*grouplist);
            group_info->blocks[i], len))
}
```


Real or AI?





Real or AI?

Real or AI?



Hands On Activity

Option 1

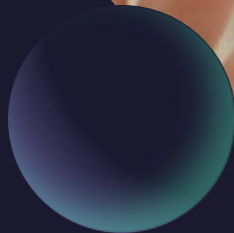
Write a program description for a program you are planning and make it apply to different age groups. Compare the differences for each description (e.g. appeals to kids, appeals to teens, appeals to adults).

Option 2

As AI to write a brief bio or resume for a public figure (famous person – musician, athlete, other celebrity).

Option 3

Create a marketing or display image using an AI image generator.





Debrief Time

What did each small group learn/do? What were your responses from the AI?

- ❖ What's your reaction to using GenAI for this exercise?
- ❖ How is it relevant to you and your patrons?
- ❖ What actions can you take using these tools?
- ❖ What are the challenges this helps you (or your patrons) overcome?

Contact Info

Maurice Coleman - colemanm@hcplonline.org
Harford County Public Library

Liz Jones - ejones@carr.org
Carroll County Public Library

Sara Stephenson - sstephenson@stmalib.org
St. Mary's County Library

