



Why Library Partners are Critical to the *All of Us* Research Program

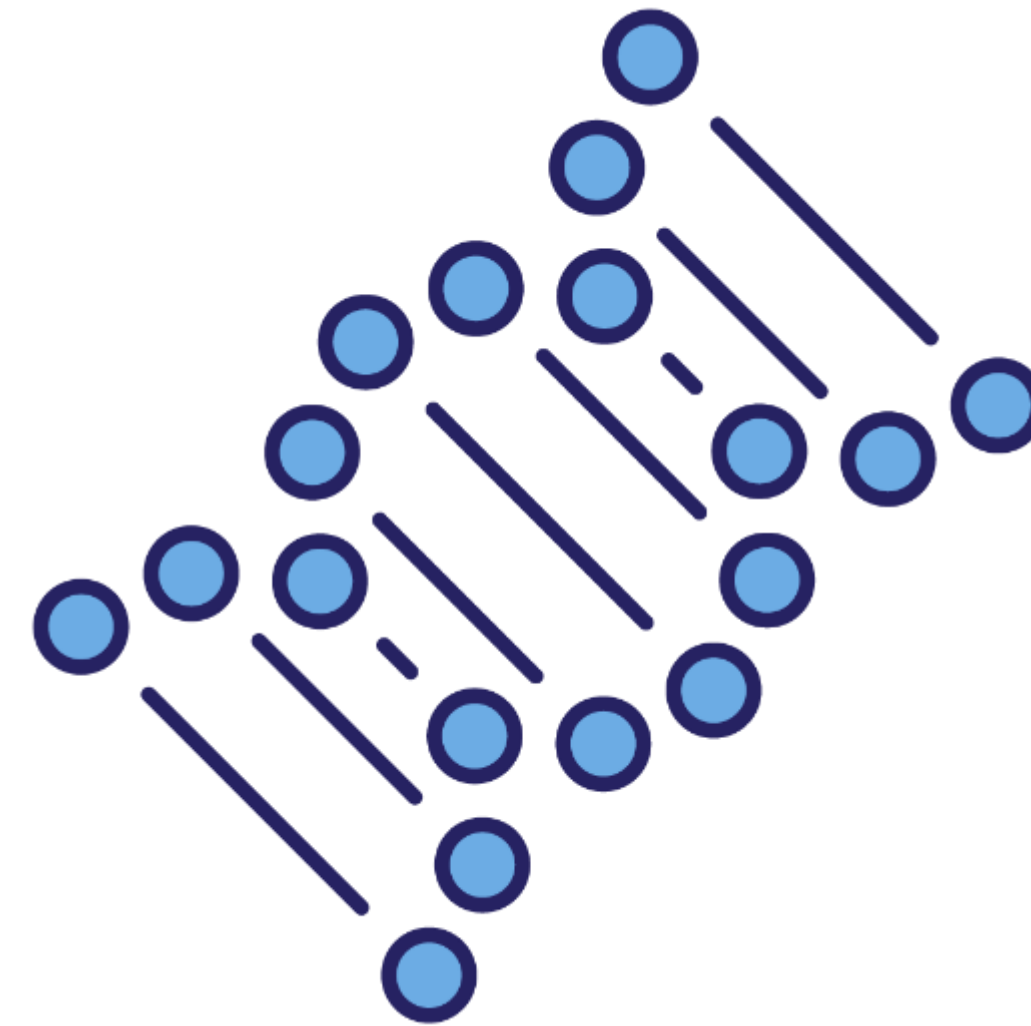


April Wright
NNLM *All of Us* Community Engagement Coordinator
December 2018

What Is Precision Medicine?

Precision medicine is an emerging approach for disease treatment and prevention that takes into account individual variability in lifestyle, environment, and biological makeup.

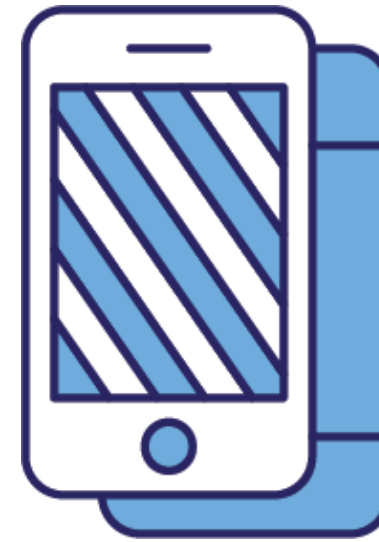
It is a radical shift in how each of us can receive the best care possible based on our unique characteristics.



Why now?



We have technologies that
can collect
and crunch huge amounts
of data.



More people are engaged
in their health, and can
track and share their data
— like steps and sleep.



We have a greater
understanding of
human genes.

The time is right.

Precision Medicine in Real Life

Right treatment for the right person



Prescription
Eyeglasses



Hearing Aid



Blood
Transfusions

All of Us Research Program: Mission and Objectives



Diversity

Reflecting the country's rich diversity to produce meaningful health outcomes for communities historically underrepresented in biomedical research.



People

Health
Status

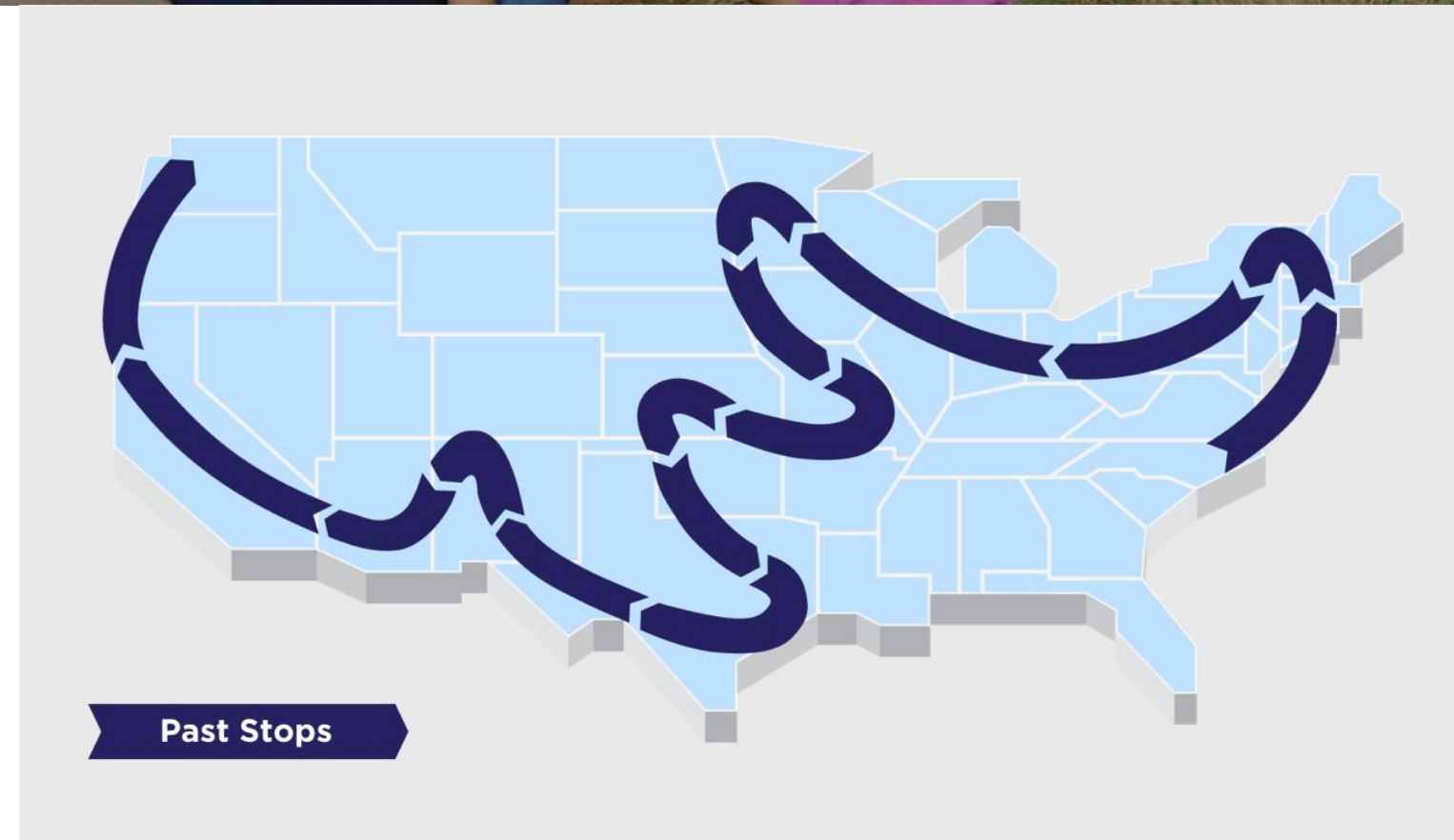
Geography

Data
Types

All of Us Core Values

- Participation in the *All of Us* Research Program will be **open** to interested individuals
- The program will reflect the rich **diversity** of America
- Participants will be **partners** in the program
- Trust will be earned through robust **engagement** and full **transparency**
- Participants will have **access** to information and data about themselves
- Data from the program will be broadly **accessible** to **empower research**
- The program will adhere to the PMI **Privacy** and **Trust** Principles and the PMI **Data Security** Policy Principles and Framework
- The program will be a catalyst for **innovative research** programs and policies

All of Us Journey



All of Us
RESEARCH PROGRAM

<https://www.joinallofus.org/en/journey>

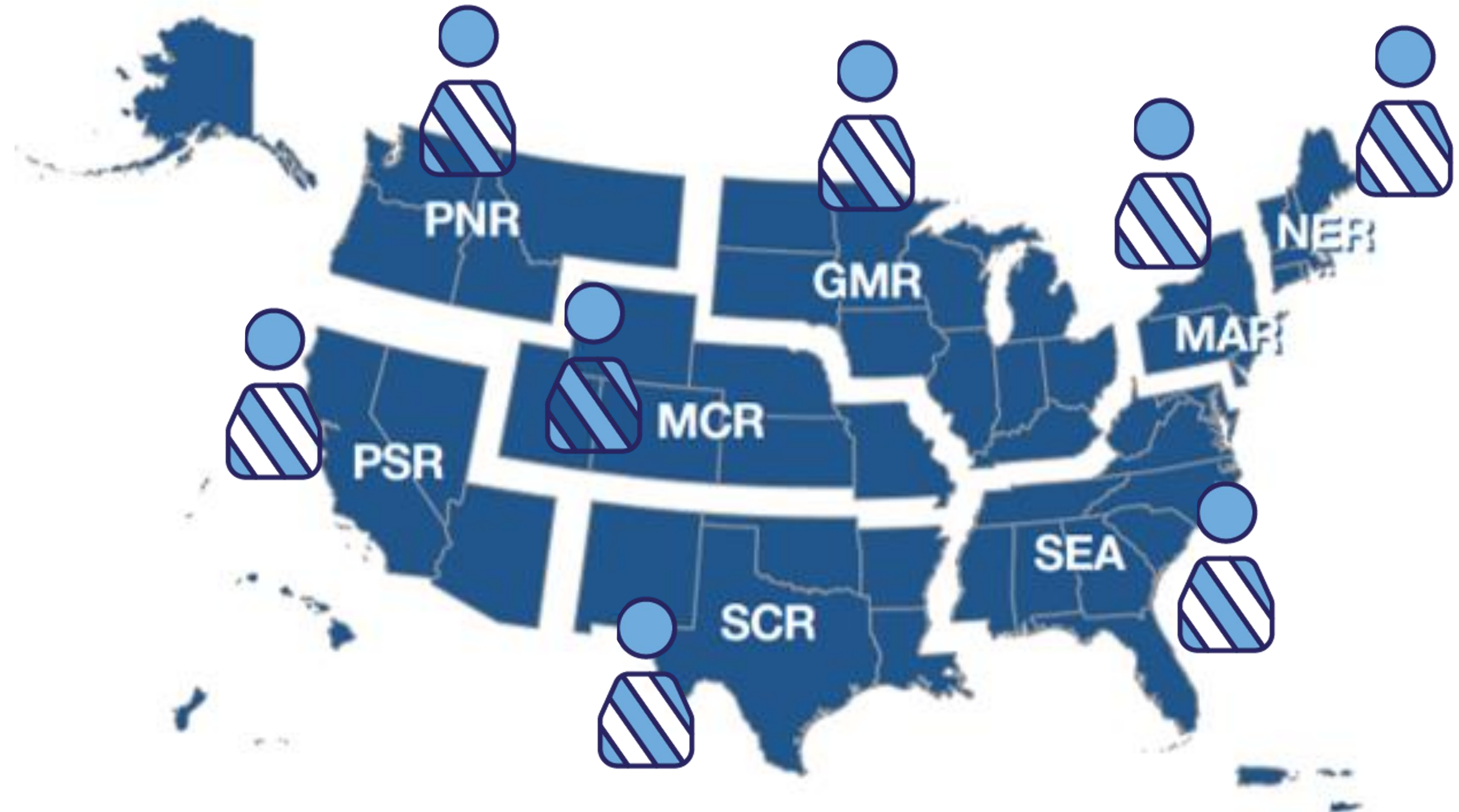


All of Us Partnership with National Network of Libraries of Medicine: *All of Us* Community Engagement Network

National Network of Libraries of Medicine (NNLM)

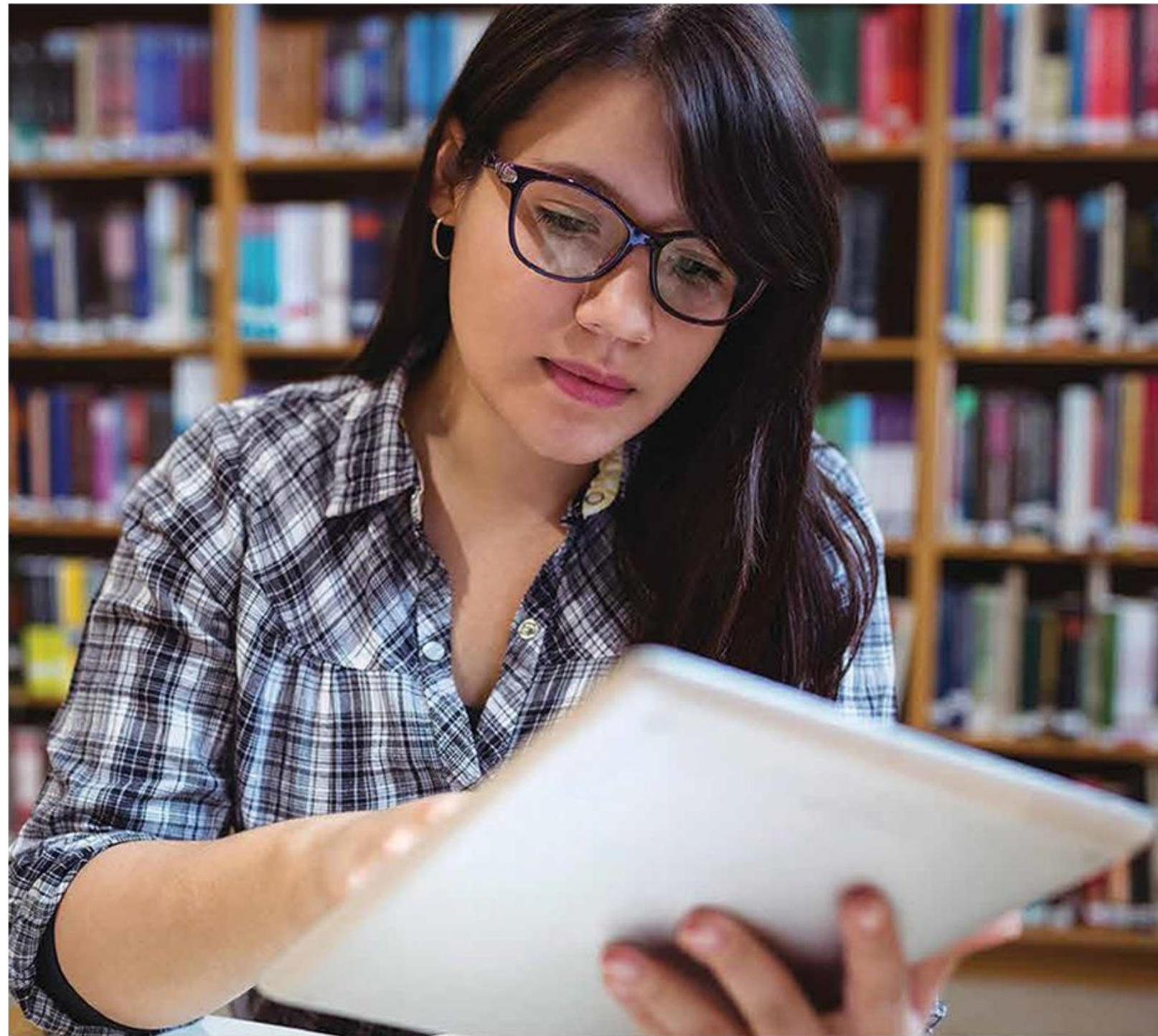
Middle Atlantic Region (MAR)
Southeastern/Atlantic Region (SEA)
Greater Midwest Region (GMR)
Mid-Continental Region (MCR)
South Central Region (SCR)
Pacific Northwest Region (PNR)
Pacific Southwest Region (PSR)
New England Region (NER)

 **NNLM Program**
 **Partner:**
Coordinator of
regional activities



8 Regional Medical Libraries

NNLM *All of Us* Community Engagement Network



U.S. National Library of Medicine
National Network of Libraries of Medicine

All of Us
RESEARCH PROGRAM

nnlm.gov/all-of-us

Goals: Partnership between *All of Us* and NNLM

- To increase the capacity of public library staff to improve health literacy.
- To equip public libraries with information about the *All of Us* Research Program to share with their local communities.
- To highlight public libraries as a technology resource that participants can use to engage with the program, particularly those in underserved communities affected by the digital divide.
- To establish the *All of Us* Training & Education Center, an online platform about *All of Us* and precision medicine, with resources for members of the public, health professionals, librarians and researchers.

The AoURP/NNLM Partnership has 3 Main Components



**Community
Education**

Community Engagement Network (CEN)



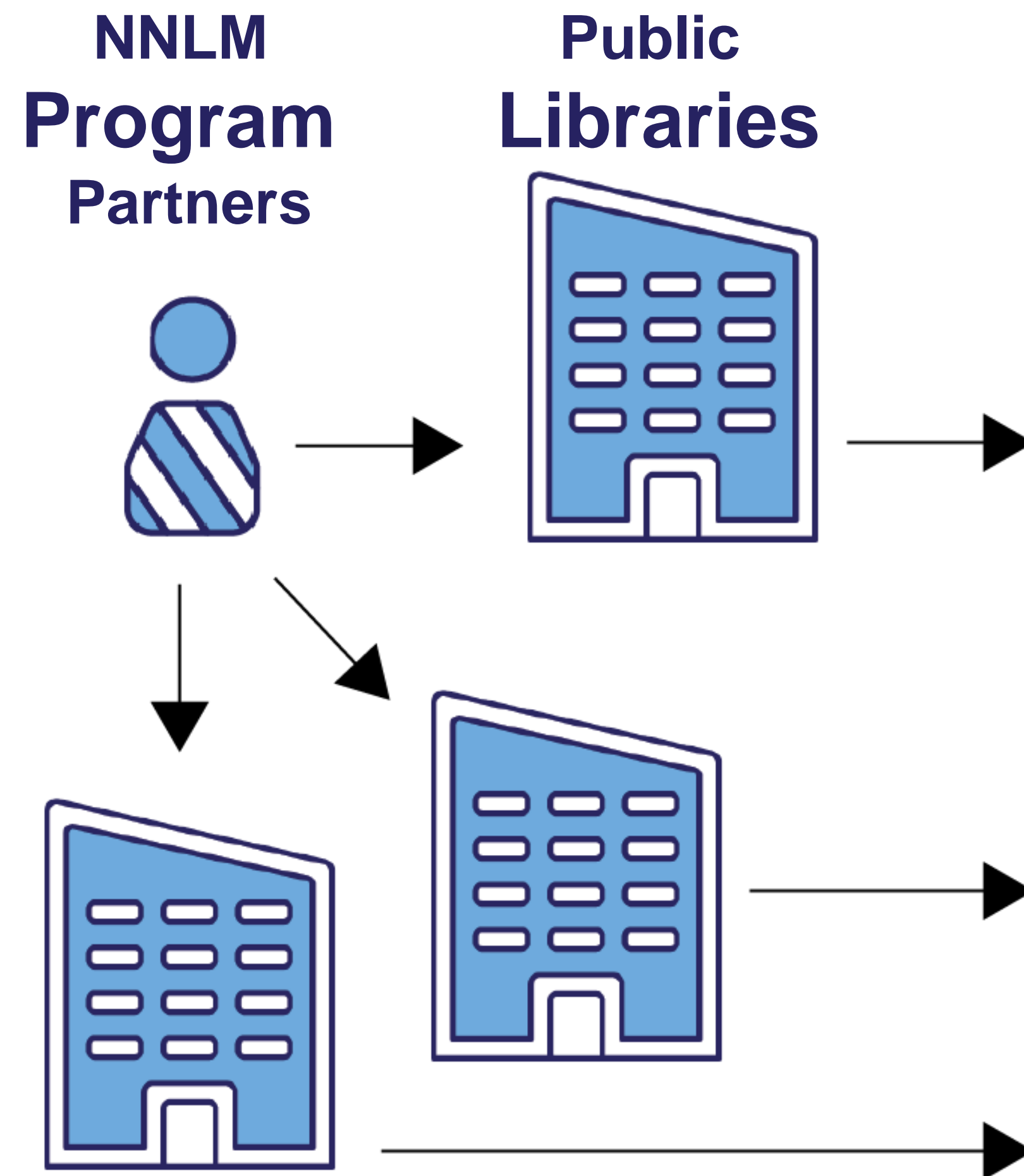
**Community
Engagement**

Training and Education Center (TEC)



**AoU Learning
Platform**

Engagement activities

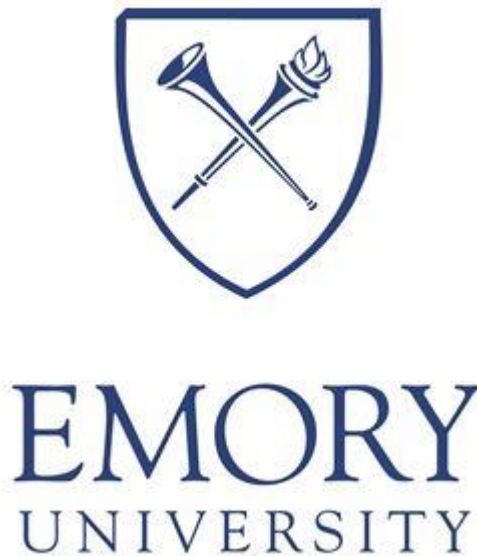


Potential engagement activities

- Speaker programs
- Book clubs: NHOs, genetics, Graphic Medicine
- Health Information kiosks & games
- Partnering with other community groups
- Multilingual programming
- Highlighting tools and resources for disabled populations
- Hosting health fairs
- Exhibiting
- Leveraging makerspaces and digital commons

And more...

Matchmaking: Public Libraries and Academic Libraries



Discussion

- How many of you offer health-related programming at your library?
 - What kinds of programs do you offer?
 - What types of programs are easy for you to use and host?
- What kinds of partnerships do you have with local hospitals or medical schools to offer programs?
- BECAUSE
LIBRARIES**



Thank You!

April Wright, MLS

All of Us Community Engagement Coordinator

National Network of Libraries of Medicine, SEA

Health Sciences and Human Services Library

University of Maryland, Baltimore

adwright@hshsl.umaryland.edu

410-706-7409